

# Roman Holub

19.10.2023

Slavonski Brod

**WELDING TABLES**  
AND WORKHOLDING TOOLS





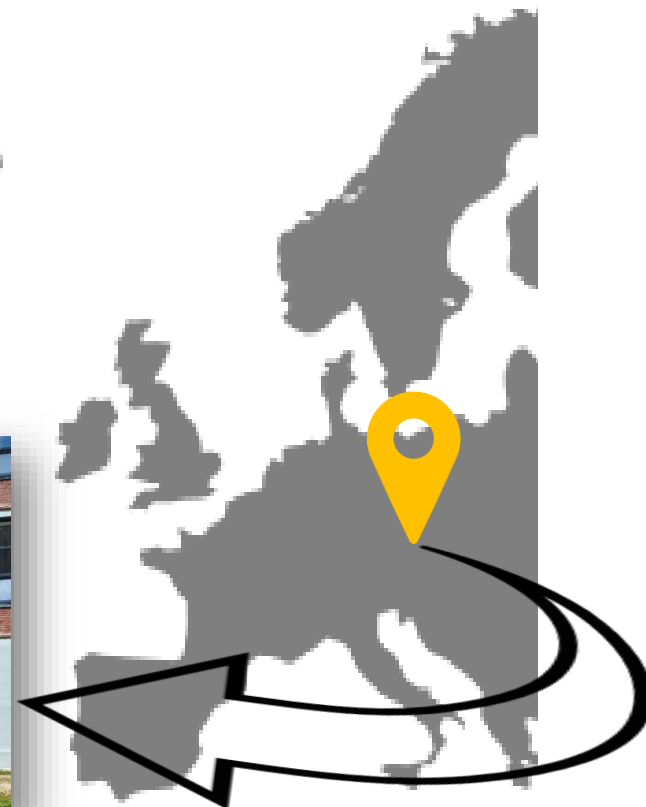
**STRONG HAND EUROPE s.r.o.**

Trebič

Czech Republic

**STRONG HAND TOOLS**

Valtra, Inc.  
Los Angeles  
USA







# STRONG HAND TOOLS

Welding Clamps – Magnets – Pliers – Vises



Magnets



Clamps



Pliers



Vises



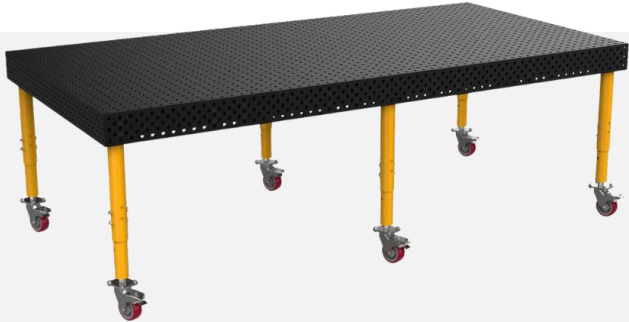
Mag-Levels



Shop Tools

...and more!

A complete line of heavy-duty and ultra-duty tables for work holding in metal fabrication and woodworking.



**Alpha 16**



**Alpha 28**



**MAX & MAX  
Slotted**

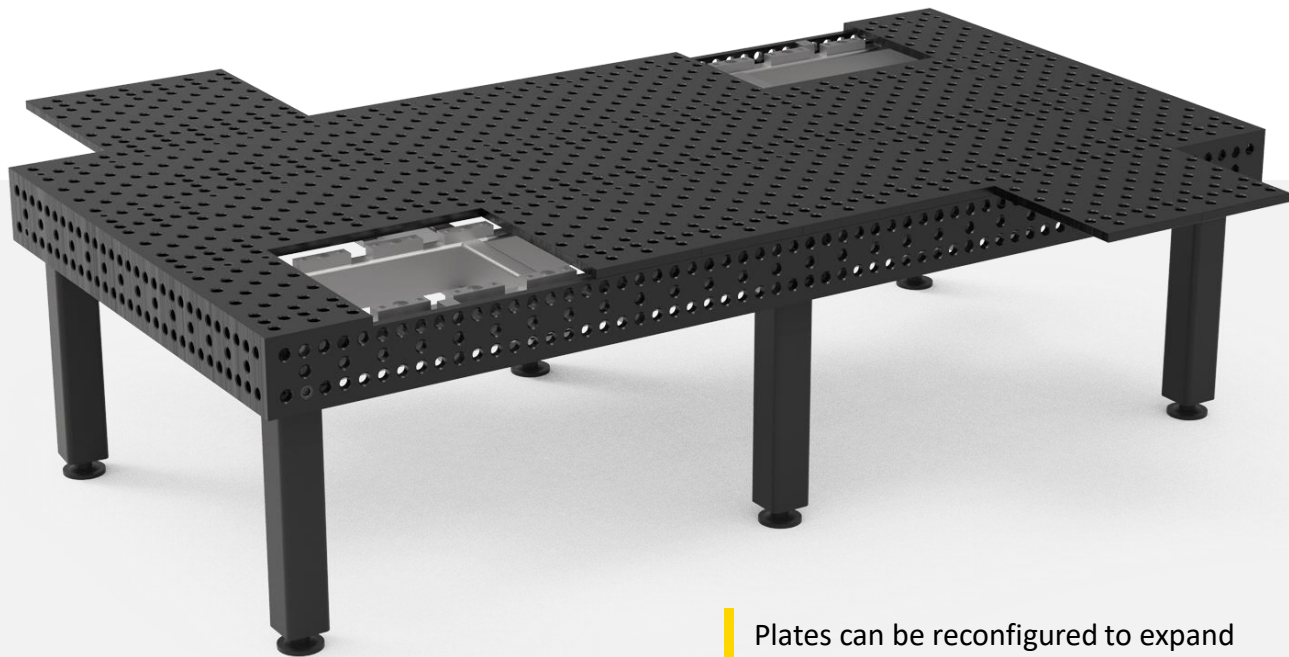
**Mobile Working  
Stations**





## THE FIVE-SIDED ALPHA WELDING TABLE

The toughest, flattest, hardest working welding tables from BuildPro by Strong Hand Tools. Five sided tables, combined with our patent-exclusive, reversible, and replaceable top and side plates.



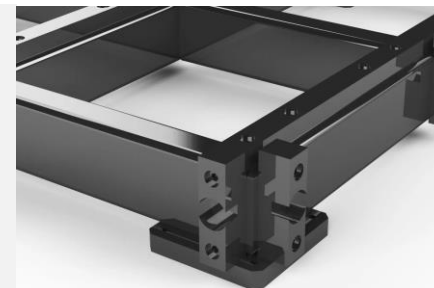
Plates can be reconfigured to expand the width of the table for larger projects.

## ALPHA TABLE OVERVIEW



**REVERSIBLE**  
Self-Locating  
Top & Side Plates

Plate Mounting  
Detail for Side  
Plates



Nitrided (Heat-Treated) Tabletop



Alpha tables available with 28 mm and 16 mm diameter boreholes.

All top plates constructed from heat-treated steel, hardened to 58-62 HRC.

Finished with a nitrite coating with a case depth of 0.01 – 0.02 mm.



	ALPHA 28 TABLES	ALPHA 16 TABLES
Table Hole Diameter	28 mm	16 mm
Hole Spacing	100 mm	50 mm
Table Flatness	0.3 mm / 1,000 mm	0.3 mm / 1,000 mm
Plate Thickness	25 mm	12 mm
Tabletop Side Height	200 mm	150 mm





### MAX Tables

Maximum Table Surface,  
Maximum Capacity. 33% more  
holes than slotted tables.



### MAX Slotted Tables

All slotted tables have  
40 mm slots between plates.

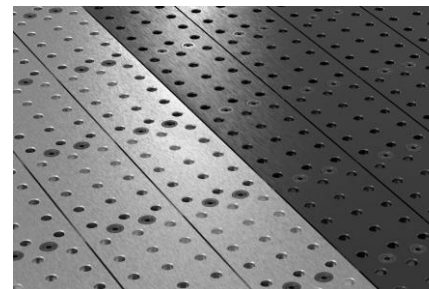
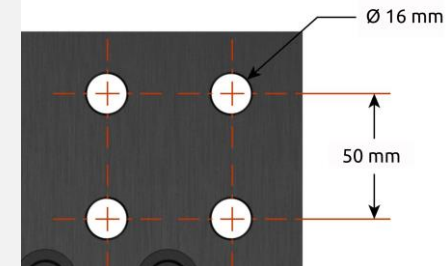
## MAX TABLE OVERVIEW



**REVERSIBLE**  
Self-Locating  
Top & Side Plates

**Table Flatness:**  
0.3 mm / 1,000 mm

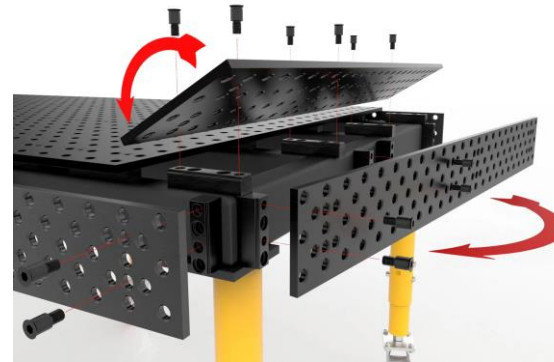
**Plate Thickness:**  
16 mm



**Standard (plain) or  
Nitrided Finish**

## Our plates are modular on a machined frame.

- The BuildPro machined table frame is more rigid than welded frames used by competitors.
- Our frame has more material and uses full square profile in the tubing. Competitors are basically only forming 3 sides of a square, so it cannot have the same resistance to torsional (twisting) forces.
- Welded frames used by competitors and nitriding of the entire table create distortion. The distortion is strongest in the corners above the legs, which is very important since those areas are used the most.
- Our plate system is flatter because they sit on top of a machined frame.



**Plates can be reversed to use both sides.**  
This doubles the table lifespan and provides exceptional value.

**Plates can slide out if needed.**  
This allows you to support wider material easily.







## MOBILE WORKING STATION

A turnkey system for fixturing and clamping in welding and fabrication. Surface ground for flatness on both sides and reversible. Nitrided finish for wear and spatter resistance.

**Comes with a 66pc. or  
122 pc. Fixturing Kit**

**Tabletop Size:** 1,200 x 750 mm

**Thickness:** 16 mm

**Flatness:** 0.5 mm / 1,000 mm

**Hole Diameter:** 16 mm

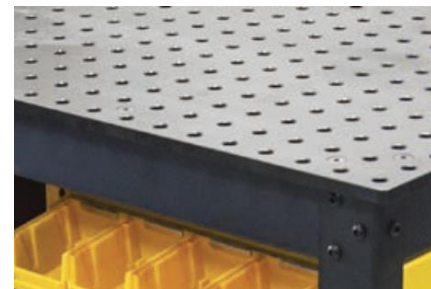
**Grid Pattern:** 50 x 50 mm

**Table Height:** 910 mm

**Static Loading Capacity:** 680 kg



## RHINO CART OVERVIEW



### **REVERSIBLE** Tabletop

Weld spatter, rust,  
and scratch resistant

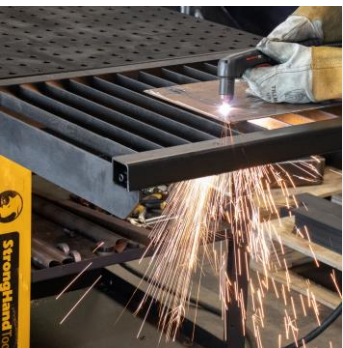
### Locking Casters

Mobile or  
stationary use



**Store & Organize**  
Shelves, racks and  
a pegboard panel

## RHINO CART ACCESSORIES



**Plasma Cutting  
Tray**



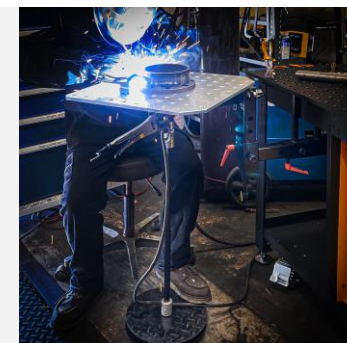
**Storage  
Tool Boxes**



**Hitch Mount Plate  
for Vise**



**Turntables**



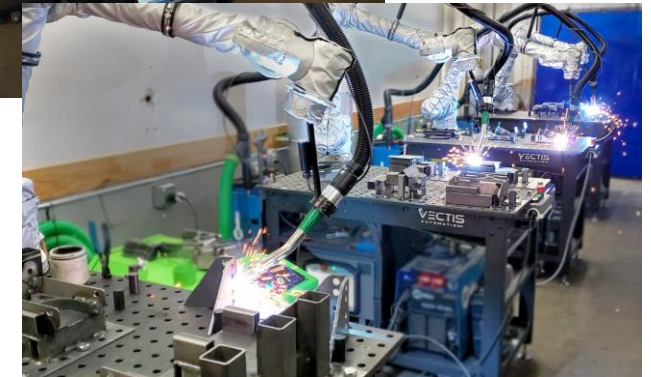
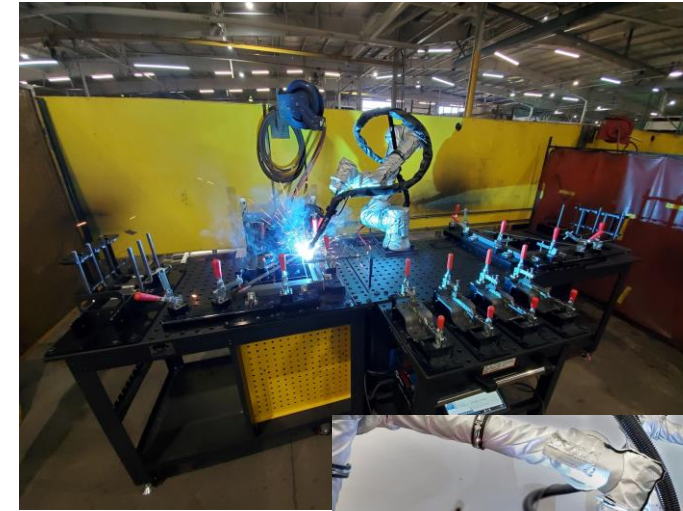
## The Industry-Leader for Cobot Applications

We are the Leading OEM partner for Collaborative Robot applications. Startups and established industry players work with us to provide their customers with turnkey solutions.

The perfect choice for automation applications that require repeatable setups with precise positioning.



## RHINO CART FOR COBOT USE



### Our Customers (USA)





## RHINO CART OPTIONS

Rhino Cart  
1,200 x 750 mm



**NEW** Rhino Cart  
1,200 x 1,200 mm



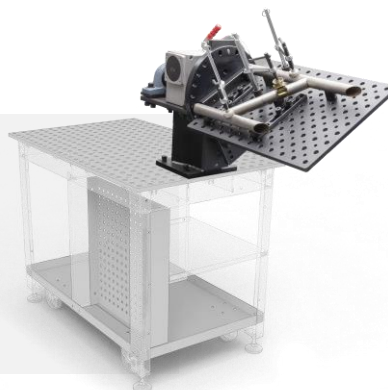
**NEW** Rhino Cart  
1,500 x 750 mm



**NEW** Rhino Lift



**NEW** Mini Rotary Positioner



**NEW** E-Lift Turntable



## RHINO CART VS. COMPETITORS



Our plate is **REVERSIBLE**, doubling its lifespan and providing exceptional value.

Our fixture kit generally provides more fixtures than competitor kits.

16mm Plate Thickness compared to 12mm by competitors.

**Additional Accessories:**  
Plasma Cutting Tray, Hitch Mount for Vise, Storage Tool Boxes, Turntables,...

Very easy to assemble.

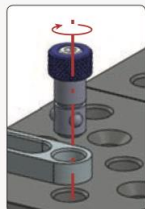
## KEY ELEMENTS in the BuildPro Modular Fixturing System

**NEW DESIGN**

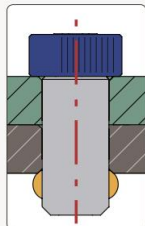


### Ball Lock Bolt

*An essential component in Modular Fixturing!*

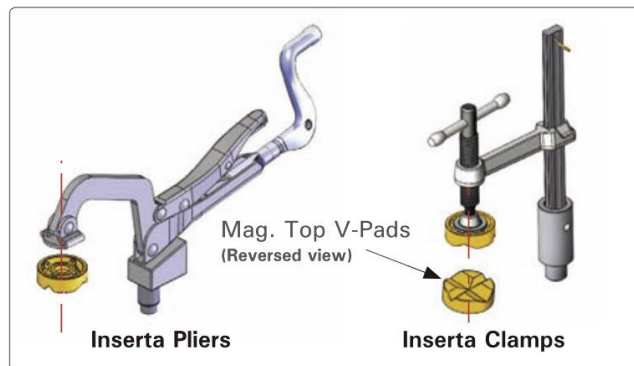


Finger tighten the knurled head after insertion to preload before tightening with Hex Key.



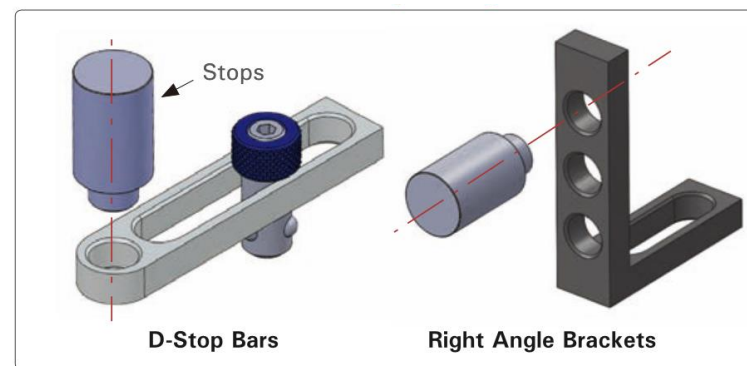
Three locking steel balls move outward to lock bolt in position.

### Clamps



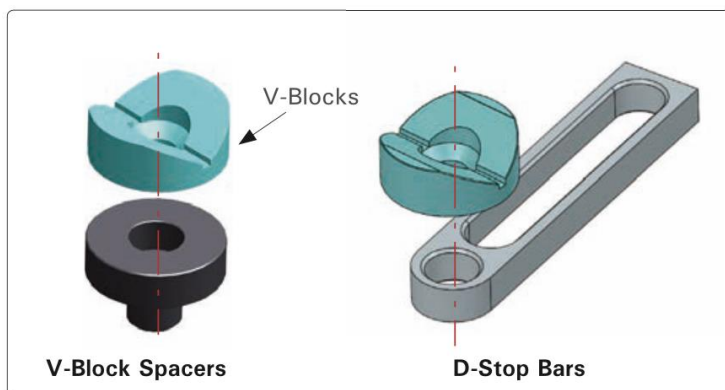
Quick hold-down clamping of flat, square, angled or round parts.

### Locate / Stop



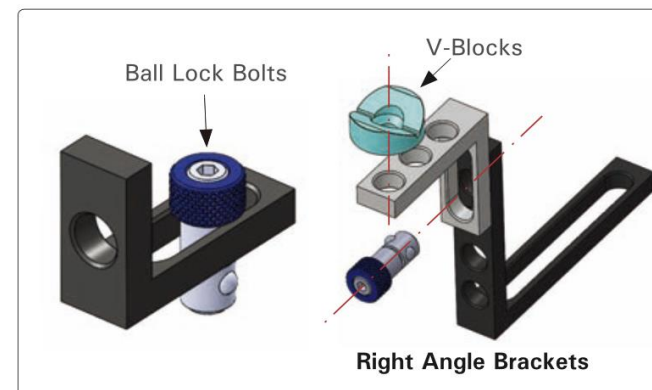
Stop, locate, and position parts.

### Support Round Stock



Elevate and hold round parts.

### Stop / Locate / Elevate



Stop and locate parts.

Stack Right Angle Brackets to elevate and hold round parts.



# Accessories for System 28

## FIXTURE ELEMENTS OVERVIEW



**Cross Post Bar  
Clamps**  
T28-64230 x12



**T-Post Pipe  
Clamps**  
T28-61416 x8



**Inserta Pliers**  
T28-60010 x4



**Inserta Pliers**  
T28-60012 x2



**Ball Lock Bolts**  
T28-46450 x48



**V-Blocks**  
T28-510612 x8



**Magnetic  
Clamping Bolts**  
T28-94280 x8



**Straight Edge  
Stops**  
T28-22155 x12



**Straight Edge  
Stops**  
T28-20255 x12



**Straight Edge  
Stops**  
T28-20501 x4



**Angle Squares**  
T28-23183 x12



**Cast Angle  
Squares**  
T28-23283 x4



**Heavy Duty  
Cast Angle  
Squares**  
T28-13028L x1 +  
13028R x1



**Frame Squares**  
T28-32103L x1 +  
32103R x1



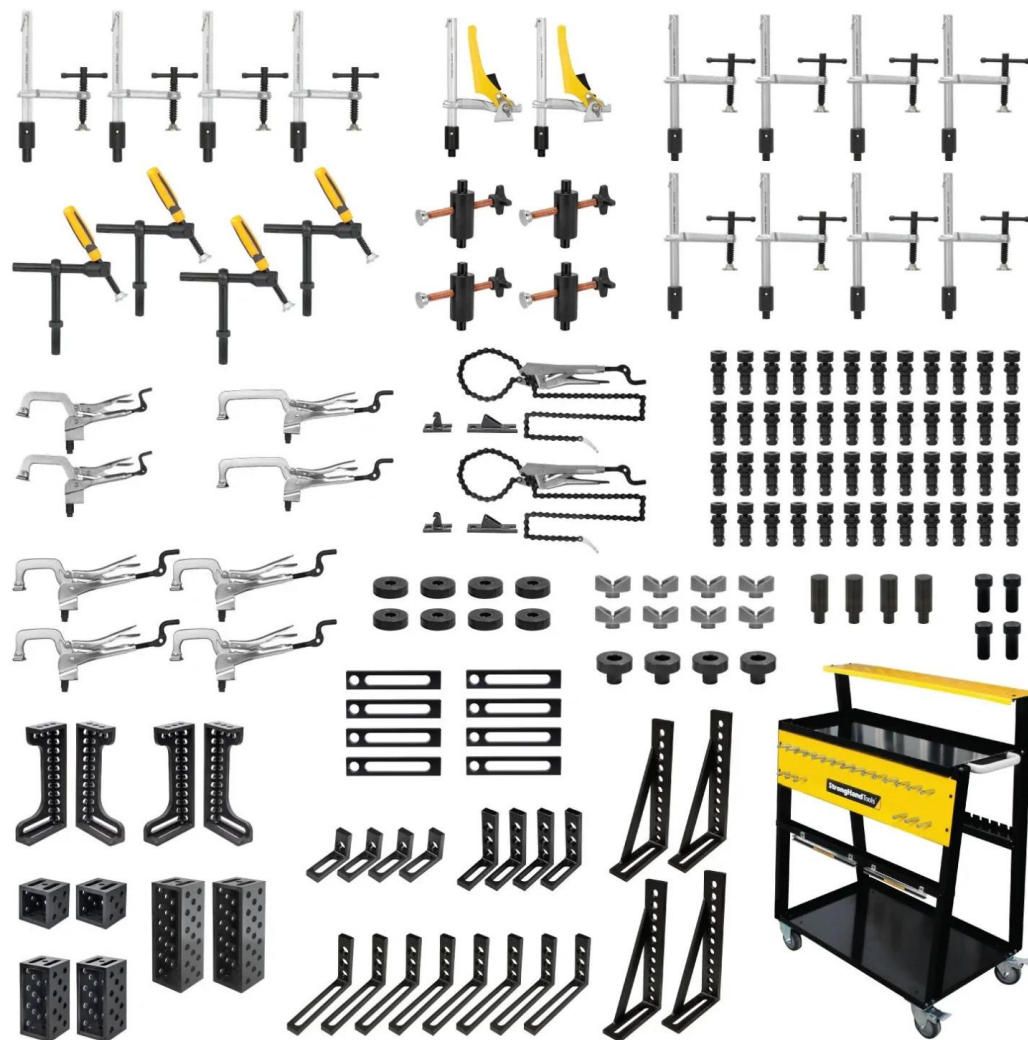
**Heavy Duty  
Cast Squares**  
T28-18038L x1 +  
18038R x1



**Tool Cart**  
T28-92915 x1

# Accessories for System 16

## FIXTURE ELEMENTS OVERVIEW



[Learn More](#)

+420 607 088 465

[Email Us](#)



[Download  
Catalogs](#)



[Tradeshow /  
Promos](#)



[About Us](#)



[Find Distributors](#)

Search products...

[Search](#)

**BUILDPRO**  
Welding Tables



### BuildPro - Rhino Working Stations

The Rhino Cart and Manipulator feature a heavy-duty tabletop that accepts all 16 mm diameter TM fixturing components.

**StrongHand**



### Strong Hand Tools

Quick Acting Welding Clamps, Magnets, Pliers, Vises and much more.

**BUILDPRO**  
Welding Tables



### BuildPro - MAX Welding Tables

Single-sided Heavy Duty Welding Tables with / without open slots.





**StrongHandEurope™**

**Website:**

[www.stronghand.eu](http://www.stronghand.eu)

**E-mail:**

[asistent@stronghand.eu](mailto:asistent@stronghand.eu)

**Phone:**

+420 607 088 465

